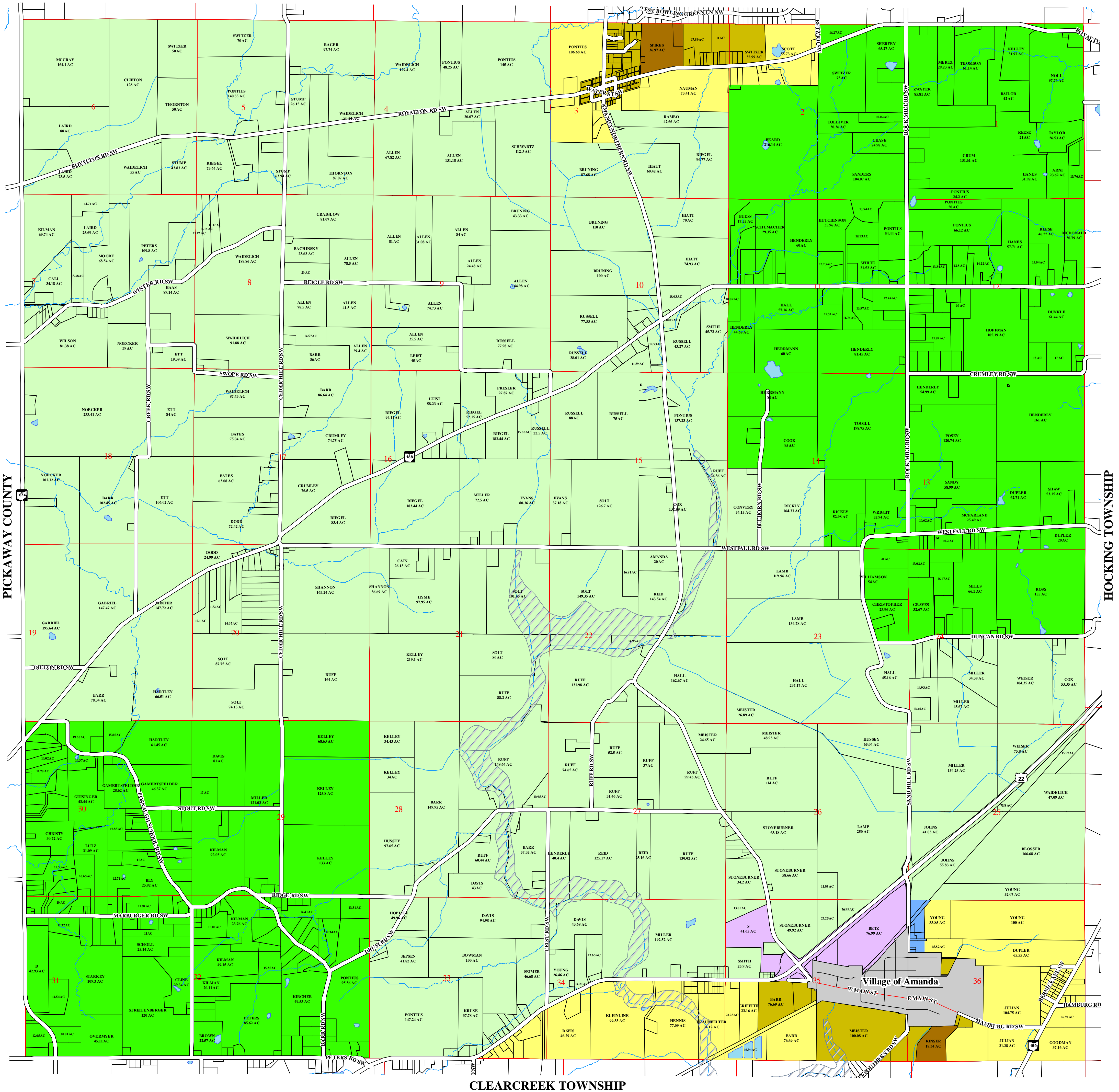


Amanda Township Zoning Map

December 2008

BLOOM TOWNSHIP



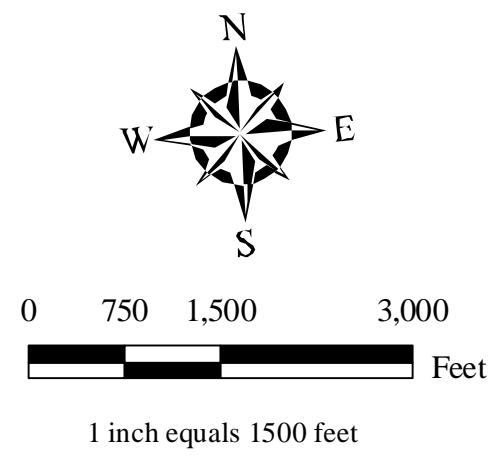
PICKAWAY COUNTY

HOCKING TOWNSHIP

CLEARCREEK TOWNSHIP



Barbara Cutiss
Fairfield County Auditor
GIS Department
210 East Main Street
Lancaster, Ohio 43130-3882
(740) 687-7122



Produced and Maintained
by the Fairfield County Auditor
GIS Department

LEGEND

ZONING

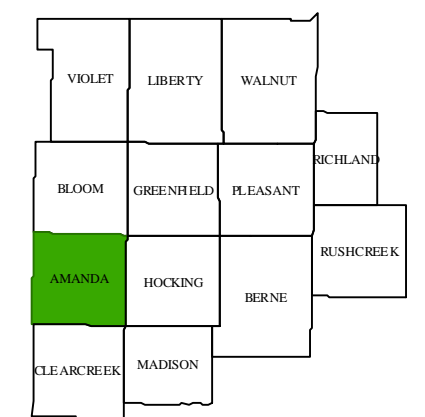
- A-1, Restricted Agricultural - 2 Acre
- A-2, Agricultural, Residential - 2 Acre
- R-1, Suburban Estate
- R-2, Multi Family
- M-H, Manufactured Housing
- B-1, Business
- I-1, Industrial

- Parcels
- Village of Amanda
- Section Lines
- Bodies of Water
- 100-Year Floodplain
- Streams
- Railroads

Zoning Amendments:

1. 2008-11 Approved 11-10-08

AMANDA TOWNSHIP FAIRFIELD COUNTY, OHIO



OFFICIAL ZONING DISTRICT MAP

Adopted by the Board of Township Trustees of Amanda Township, Fairfield County, Ohio as part of Resolution 2001-05, passed this 7th day of July, 2001

DISCLAIMER
All data created by the Fairfield County Auditor, GIS Department has been developed to meet National Map Accuracy Standards. All GIS data layers are referenced in the Ohio South State Plane Coordinate System. Horizontal data - North American Datum (NAD) 83 (95). Vertical data - North American Datum Vertical Datum (NAVD) 88. Units - Surveyors Feet.
All data has been developed from public records that are constantly undergoing change and is not warranted for content, completeness or accuracy. Fairfield County does not warrant, guarantee or represent the data to be fit for a particular use or purpose.
Please notify the Fairfield County Auditor, GIS Department with any discrepancies.