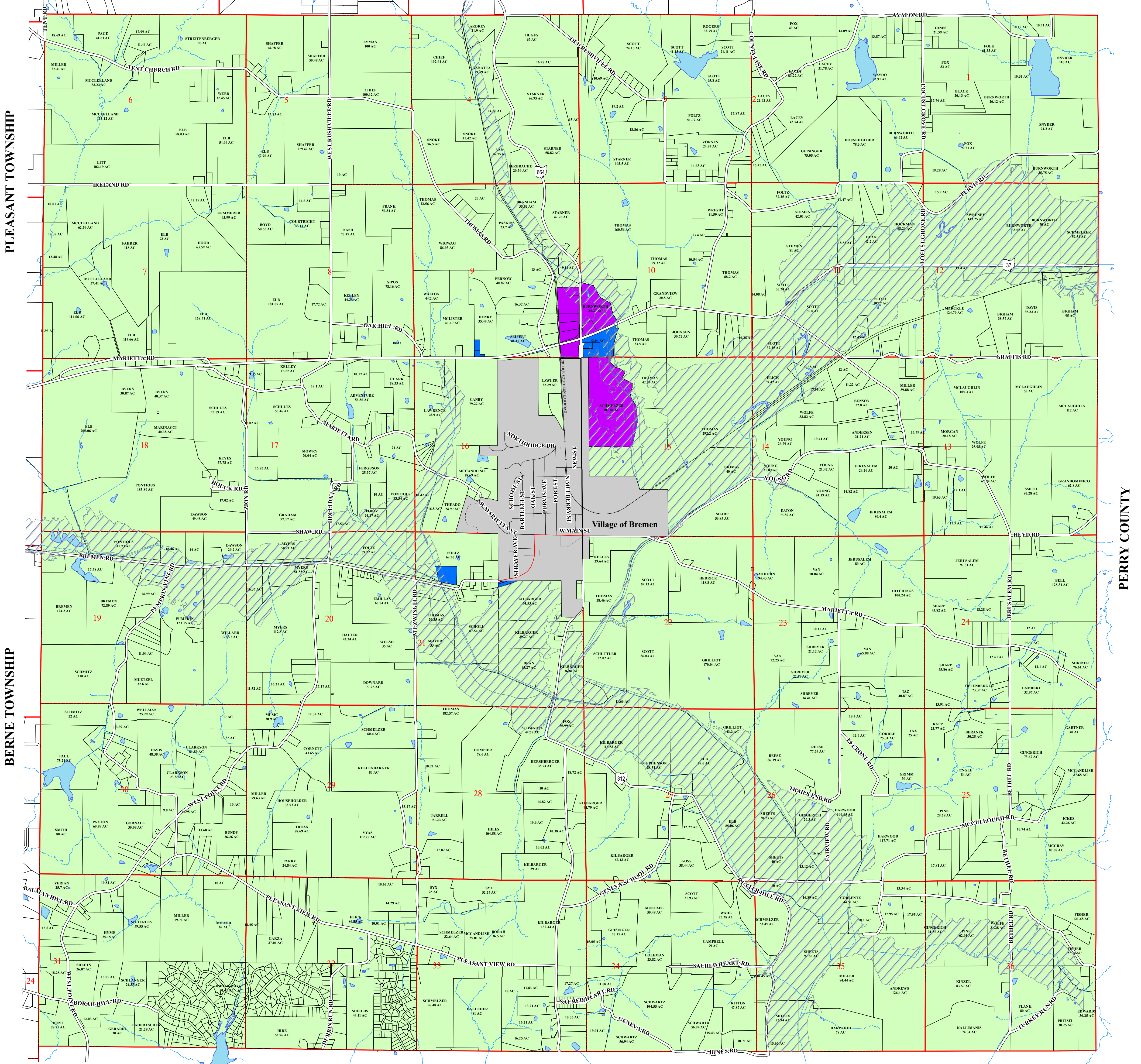


Rushcreek Township Zoning Map

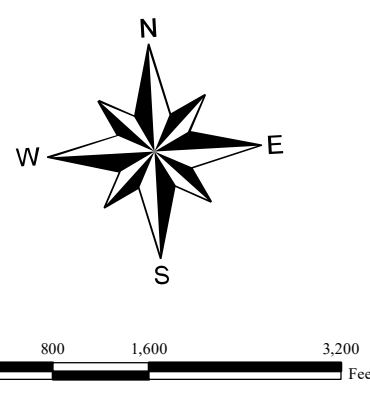
May 2022

RICHLAND TOWNSHIP

PERRY COUNTY



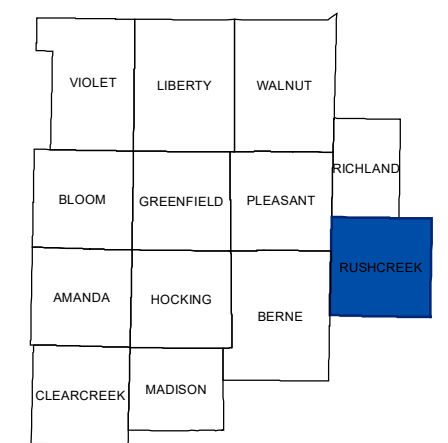
HOCKING COUNTY



- LEGEND**
- ZONING**
- R-R, Rural Residential District
 - MHP, Manufactured Home Park District
 - B-1, Highway Business - Commercial District
 - I-1, General Industrial District
 - PUD, Planned Unit Development District
 - F-P, Flood Plain Overlay District

- Zoning Updates:**
- Section Lines
 - Corporation Boundaries
 - Parcels
 - Bodies of Water
 - Streams
 - Railroads

RUSHCREEK TOWNSHIP FAIRFIELD COUNTY, OHIO



Carri L. Brown, Ph.D., M.B.A., C.G.P.M.
COUNTY AUDITOR
FAIRFIELD COUNTY
GIS DEPARTMENT
108 NORTH HIGH STREET, RM 105
LANCASTER, OHIO 45110-3710
P: (740) 652-7055

Disclaimer
All data provided by Fairfield County Auditor GIS Department has been developed to meet National Map Accuracy Standards. All GIS data layers are referenced to the Ohio State Plane Coordinate System, NAD 83, North American Datum (NAD 83) (N) Vertical datum - North American Datum Vertical Datum (NAD 83) (V) - Geoid Height.
All data has been developed from public records that are constantly undergoing change and is not warranted for content, completeness or accuracy. Fairfield County does not warrant, guarantee or represent the data to fit for a particular use or purpose.
If detailed information is required for data layers shown, please contact the GIS Department.
Please notify the Fairfield County Auditor, GIS Department with any discrepancies.

OFFICIAL ZONING DISTRICT MAP
Adopted by the Board of Township Trustees of Rushcreek Township, Fairfield County Ohio, passed this 2nd day of April, 2007
Effective May 2, 2007