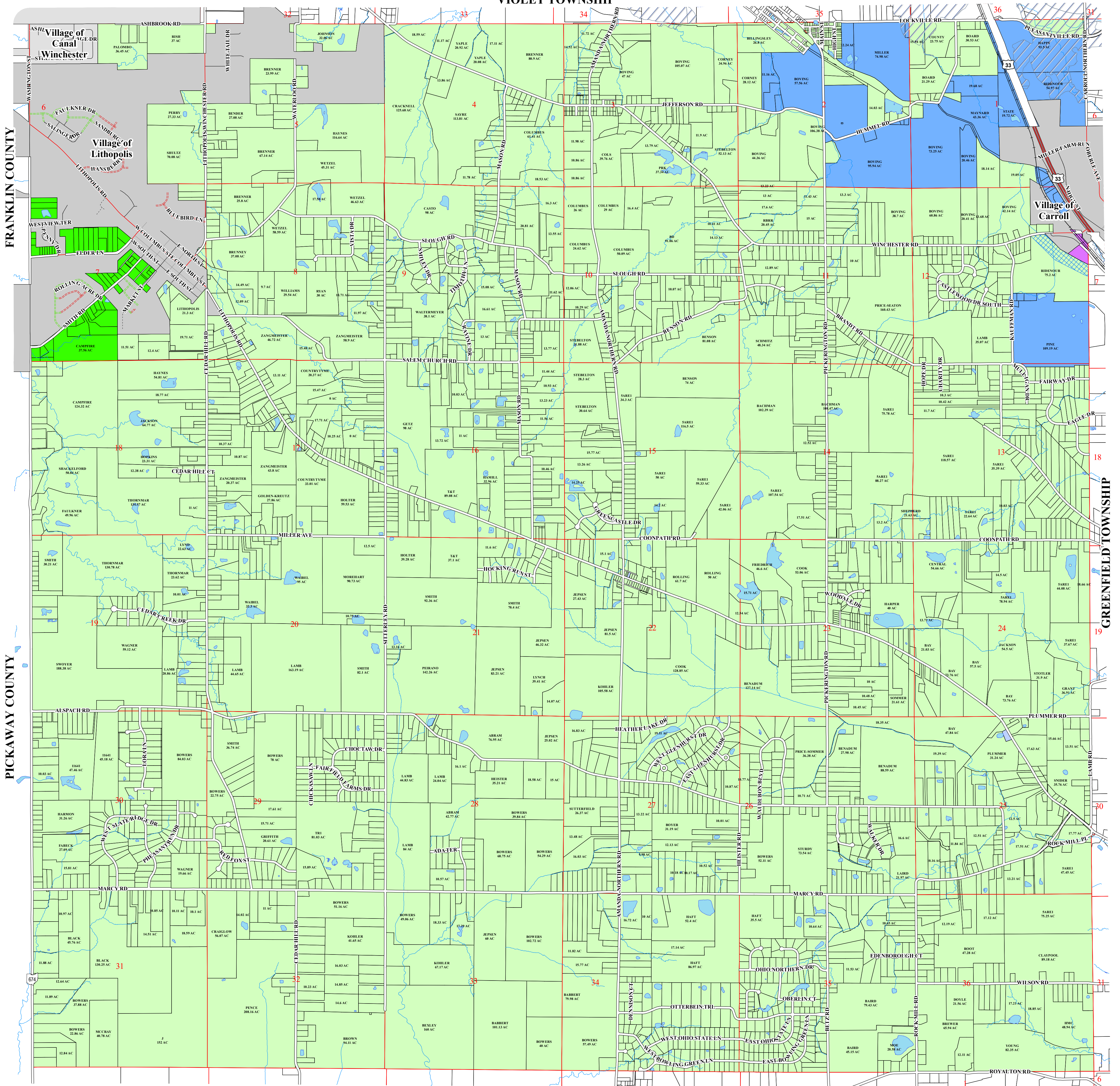


Bloom Township Zoning Map

May 2022

VIOLET TOWNSHIP

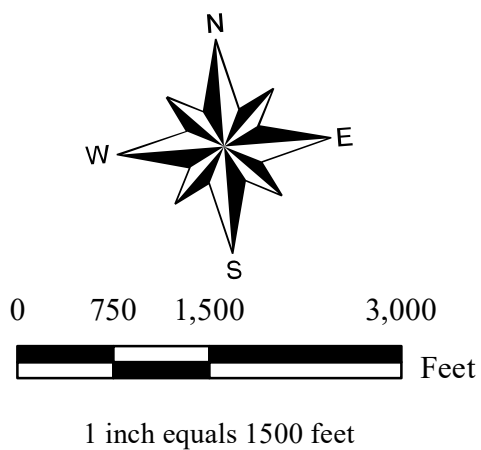


AMANDA TOWNSHIP



Carri L. Brown, Ph.D., MBA, CGFM
COUNTY AUDITOR

FAIRFIELD COUNTY
GIS DEPARTMENT
108 NORTH HIGH STREET, RM 105
LANCASTER, OHIO 43130-3710
P: (740) 652-7055



DISCLAIMER

All data created by the Fairfield County Auditor. GIS Department has been developed to meet National Map Accuracy Standards. All GIS data layers are referenced in the Ohio South State Plane Coordinate System. Horizontal data - North American Datum (NAD) 83 (95). Vertical data - North American Datum Vertical Datum (NAVD) 88. Units - Surveyors Feet.
All data has been developed from public records that are constantly undergoing change and is not warranted for content, completeness or accuracy. Fairfield County does not warrant, guarantee or represent the data to be fit for a particular use or purpose.
Please notify the Fairfield County Auditor, GIS Department with any discrepancies.

LEGEND

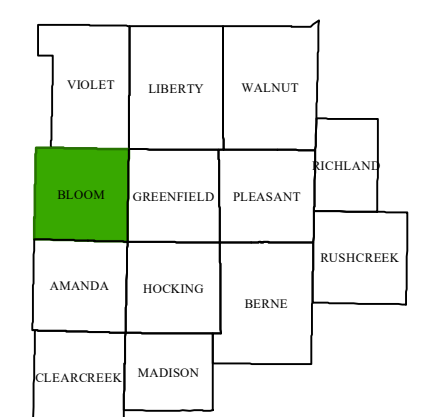
ZONING

- R-R, Rural Residential
- R-1, Suburban Single Family
- R-2, One- & Two-Family
- R-3, Multi-Family
- R-MH, Manufactured Home Park
- B-1, Limited Business & Suburban Office
- B-2, Commercial Business
- B-3, Intensive & Motorist Services Business
- E-B-3, Intensive & Motorist Services Business Buffer
- I-1, Light Industrial

Zoning Amendments:

- I-2, Heavy Industrial
- P-D, Planned Unit Development
- 100-Year Floodplain
- Corporation Boundaries
- Section Lines
- Parcels
- Bodies of Water
- Streams
- Railroads

**BLOOM TOWNSHIP
FAIRFIELD COUNTY, OHIO**



OFFICIAL ZONING DISTRICT MAP

Adopted by the Board of Township Trustees of Bloom Township, Fairfield County, Ohio, passed this 24th day of July, 1991