

Cut Line
33.75'

Visible Area
30.75'

Carri L. Brown, Ph.D., MBA, CGFM
COUNTY AUDITOR

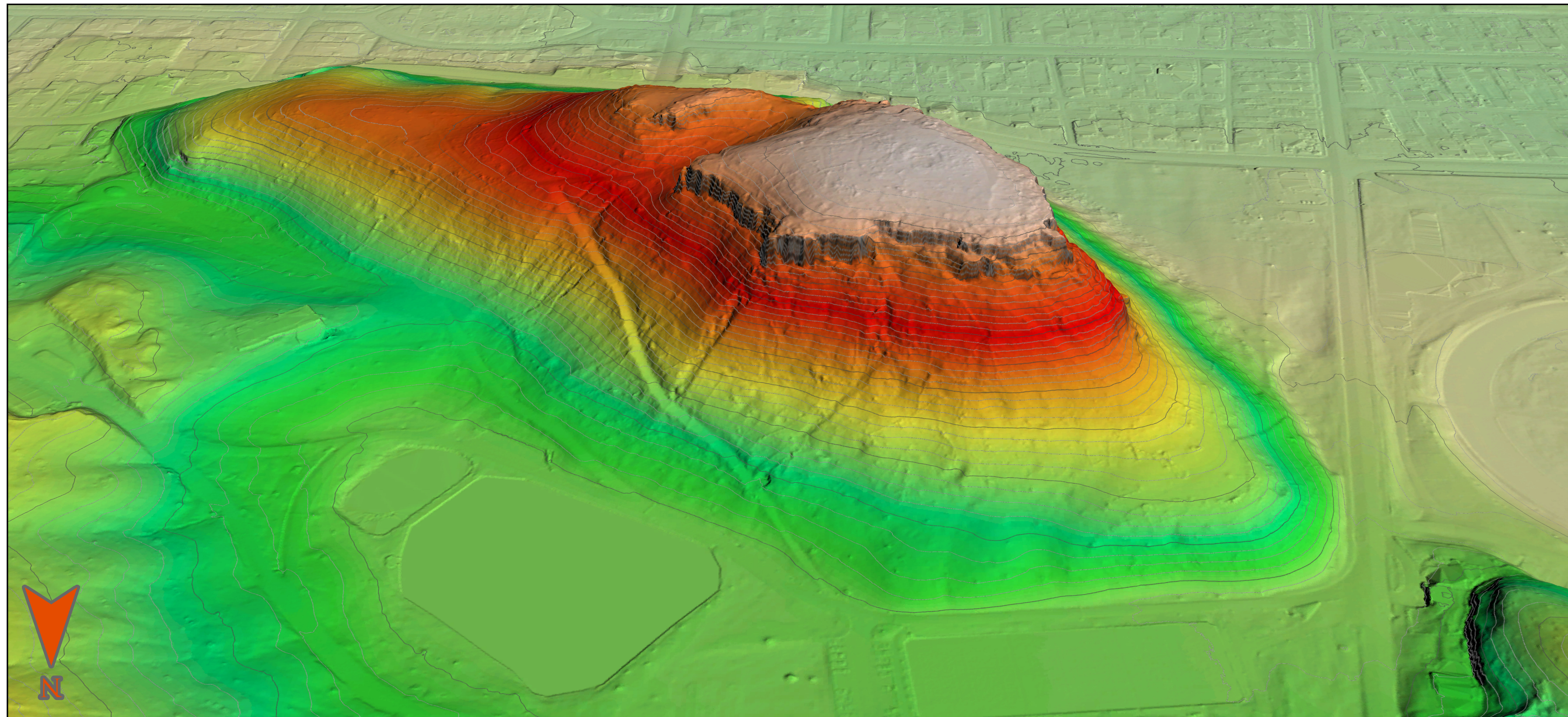
FAIRFIELD COUNTY
GIS DEPARTMENT
108 NORTH HIGH STREET, RM 105
LANCASTER, OHIO 43130-3710
P: (740) 652-7055

LiDAR View of Mt Pleasant

Highest Elevation = 1094' +/-



LIDAR, which stands for Light Detection and Ranging, is a remote sensing method that uses light in the form of a pulsed laser to measure ranges (variable distances) to the Earth. These light pulses—combined with other data recorded by the airborne system—generate precise, three-dimensional information about the shape of the Earth and its surface characteristics.



Visible Area
18.88'

Cut Line
21.88'