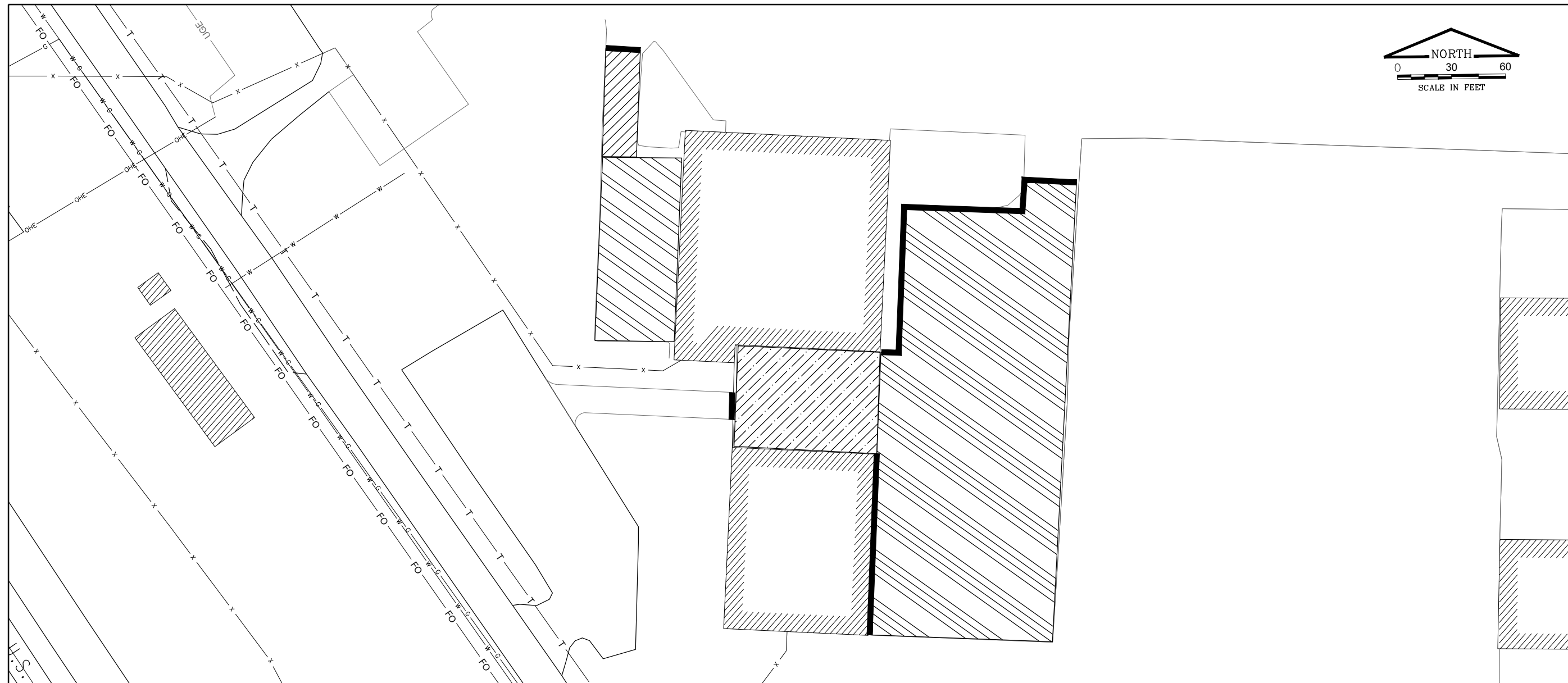
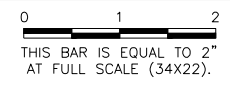


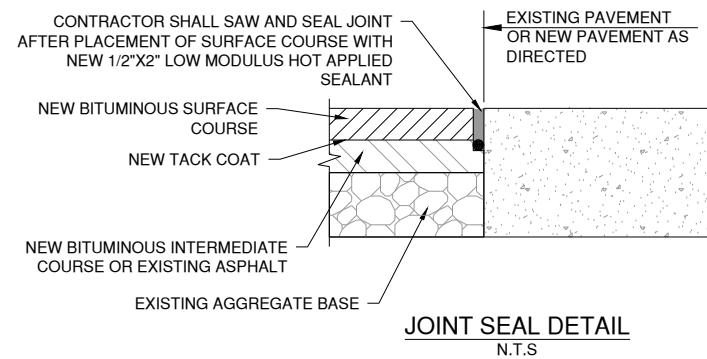
REVISIONS		
NUMBER	BY	DATE



FAIRFIELD COUNTY AIRPORT AUTHORITY
FAIRFIELD COUNTY AIRPORT
LANCASTER, OHIO
2019 LOCAL PAVING PROJECTS
ADDENDUM #1 EXHIBIT

LEGEND

- — — — — PROPOSED PAVEMENT MARKINGS 6- INCH YELLOW
- X — X — EXISTING FENCE
- TAXIWAY A - PROPOSED 2" MILL AND 2" OVERLAY
- HANGAR A WEST - PROPOSED 2" MILL AND 2" OVERLAY
- HANGAR AB SOUTH - PROPOSED 2" MILL AND 2" OVERLAY
- HANGAR AB EAST - PROPOSED 2" MILL AND 2" OVERLAY
- SAWED/SEALED JOINT



JOINT SEAL NOTES:

1. CONTRACTOR SHALL SAW & SEAL SPECIAL JOINTS, AT LIMITS BETWEEN EXISTING AND PROPOSED ASPHALT PAVEMENT OR AS DIRECTED BY ENGINEER.
2. ALL JOINTS SEALED SHALL USING LOW MODULUS HOT POUR MATERIAL CONFORMING TO ASTM-D6690 TYPE IV.
3. THE BACKER ROD OR BOND BREAKER TAPE SHALL BE AS NOTED OR THE SAME WIDTH AS THE JOINT AND REMAIN ADHERED TO THE BOTTOM OF THE SEALANT RESERVOIR.

NOTES

1. ENGINEER WILL DETERMINE LOCATIONS OF PAVEMENT REPAIR PRIOR TO THE BEGINNING OF CONSTRUCTION AND AFTER THE COMPLETION OF PLANING.
2. AREA SHALL BE THOROUGHLY CLEANED AND SWEEPED AFTER PLANING AND REPAIR OPERATIONS. ENGINEER SHALL APPROVE PRIOR TO TACK COAT PLACEMENT.
3. AFTER PAVING OPERATIONS ARE COMPLETE, THE WORK AREA(S) SHALL BE INSPECTED BY THE CONTRACTOR ALONG WITH THE AIRPORT AND ENGINEER PRIOR TO REOPENING TO AIR TRAFFIC. FINAL PAVEMENT MARKINGS SHALL BE APPLIED AFTER THE NEW PAVEMENT HAS CURED FOR 30 DAYS.
4. WHERE NEW PAVEMENT ABUTS EXISTING PAVEMENT, THE JOINT BETWEEN SHALL BE SAWED AND SEALED. SEE JOINT SEAL DETAIL ON DETAILS SHEET. ALL COSTS TO BE INCLUDED IN ASPHALT CONCRETE PAVEMENTS.



BID SET

DESIGN BY:	CER
DRAWN BY:	MTV
CHECKED BY:	
APPROVED BY:	
DATE:	08/28/2019
JOB No:	19065001