

## Facilities Operations Department

Jon Kochis  
*Facilities Director*

Dennis R. Keller  
*Facilities Deputy Director*



## Board of County Commissioners

Steven A. Davis  
*Commissioner*

Jeff Fix  
*Commissioner*

David L. Levacy  
*Commissioner*

## **ADDENDUM #1**

### **REPLACEMENT OF CARPET FLOORING HALL OF JUSTICE**

**DATE ISSUED: May 6, 2024**

In accordance with the Construction Documents for the above named Project, this ADDENDUM #1, consisting of page 1 of 1 stating the revised sections of the ITB, along with revised floor plans for the Second and Fourth Floors, and the table of Carpet Replacement Areas; is hereby made a part of the Construction Documents as if written therein. RECEIPT OF THIS ADDENDUM MUST BE ACKNOWLEDGED ON THE BID FORM.

#### **NOTIFICATION TO BIDDERS:**

Item 1: Revise Section 6.2 Schedule and Coordination to add:

Paragraph 6.2.2 - All work must be performed outside of the normal weekday operating hours in the building of 7:30AM – 4:30 PM. Weekend work is permissible.

Item 2: Revise Section 4 General Conditions and Scope of Work to add:

Paragraph 4.12 - Transition strips are not required under doors to abut existing vinyl flooring. Adjust elevation of substrate with floor fill to make a smooth transition to existing flooring.

Paragraph 4.13 - Provide a minimum of 12 carpet tiles for each carpet type, as Attic Stock to the Owner at the completion of the project.

Item 3: Revised Sketches and Carpet Replacement Area Table

- A. The sketch for the Second Floor has been revised to add the Clerk of Courts area in Room 212 as a shaded area, and now included in the Work.
- B. The sketch for the Fourth Floor has been revised to delete the Clerk of Courts area in Room 405/406, as NOT SHADED and no longer included in the Work area.
- C. The table listing Carpet Replacement Areas has been revised to add the Room 212 Clerk of Courts area, and to remove the Room 405/406 Clerk of Courts area.

End of Addendum #1.

	A	B	C	D	E	F	G	H	I
1	<b>Hall Of Justice - Carpet Replacement Areas</b>								
3	<b>Room Number/Name</b>		<b>Approximate Dimensions</b>		<b>Approx SF Total</b>		<b>Carpet Type</b>	<b>Base Type</b>	
4	<b><u>First Floor</u></b>								
5	Main Public Entry		16' x 22'2"		355.20 ft <sup>2</sup>		1	Vinyl	
6	Side Entry		7' x 35'		245 ft <sup>2</sup>		1	Vinyl	
7	Entry Connector		8' x 13'		150 ft <sup>2</sup>		1	Vinyl	
8	101 Adult Probation		33' x 66'		2178 ft <sup>2</sup>		2	Vinyl	
9	Probation Admin		15' x 24' & 11' x 5'		415 ft <sup>2</sup>		2	Vinyl	
10	102 Law Library		21.1" x 33'2"		700 ft <sup>2</sup>		2	Vinyl	
11	First Floor - 4043.20 ft <sup>2</sup> = 449.24 yards = <b>450 yards</b>								
12	<b><u>Second Floor</u></b>								
13	203 Com Plea Court Admin		15' x 27'		405 ft <sup>2</sup>		2	Wood	
14	203A Judge Office & RR		27' x 15' & 6' x 7'		447 ft <sup>2</sup>		2	Wood	
15	Kitchenette & Copy		6' x 16'		96 ft <sup>2</sup>		2	Wd & Vinyl	
16	205 Berens Court Room		46' x 33.2'		1527.2 ft <sup>2</sup>		2	Wood	
17	205A East Jury Room & RR's		13' x 25.6'		332.8 ft <sup>2</sup>		2	Vinyl	
18	212 Clerk of Courts & Offices		45.8 x 33		1513 ft <sup>2</sup>		2	Vinyl	
19	Second Floor - 4321 ft <sup>2</sup> = <b>480 yards</b>								
20	<b><u>Third Floor</u></b>								
21	306 Juv Court Admin & RR		21' x 16' & 4' x 6'		360 ft <sup>2</sup>		2	Vinyl	
22	306A Judge Office & RR		21' x 17' & 4' x 6'		387 ft <sup>2</sup>		2	Wood	
23	304 Courtroom A (South)		37' x 33'		1221 ft <sup>2</sup>		2	Wood	
24	302 Courtroom B (North)		29.6"x24.6" & 5'x9' & 6.6"x19'		738 ft <sup>2</sup>		2	Wood	
25	Third Floor - 2682 ft <sup>2</sup> = <b>298 yards</b>								
26	<b><u>Fourth Floor</u></b>								
27	402- Court Admin (Smith)		13'x23' / 10'x10'		399 ft <sup>2</sup>		2	Wood	
28	402A Judge Office		5.6"x5.6" / 3.6"x9.6" / 15'x19'		351 ft <sup>2</sup>		2	Wood	
29	404 Courtroom(Smith)		23'x22'		510 ft <sup>2</sup>		2	Wood	
30	401 Courtroom 1 (Miller)		22'x23' / 4'x9'		542 ft <sup>2</sup>		2	Wood	
31	403 Court Admin		11'x31' / 5'x5'		366 ft <sup>2</sup>		2	Wd/Vinyl	
32	403A Judge Office		12'x15'		180 ft <sup>2</sup>		2	Wood	
33	403B Magistrate Office		12'x11'		132 ft <sup>2</sup>		2	Vinyl	
34	407 Courtroom 2(Cleary)		15'x23' / 8'x16'		473 ft <sup>2</sup>		2	Vinyl	
35	Fourth Floor - 2953 ft <sup>2</sup> = <b>328 yards</b>								
36	<b>Total Carpet R/R = 13,999.20 ft<sup>2</sup> = 1,556 Yards</b>								
37	<b>ADDENDUM #1</b>								

# BUILDING FLOOR PLAN

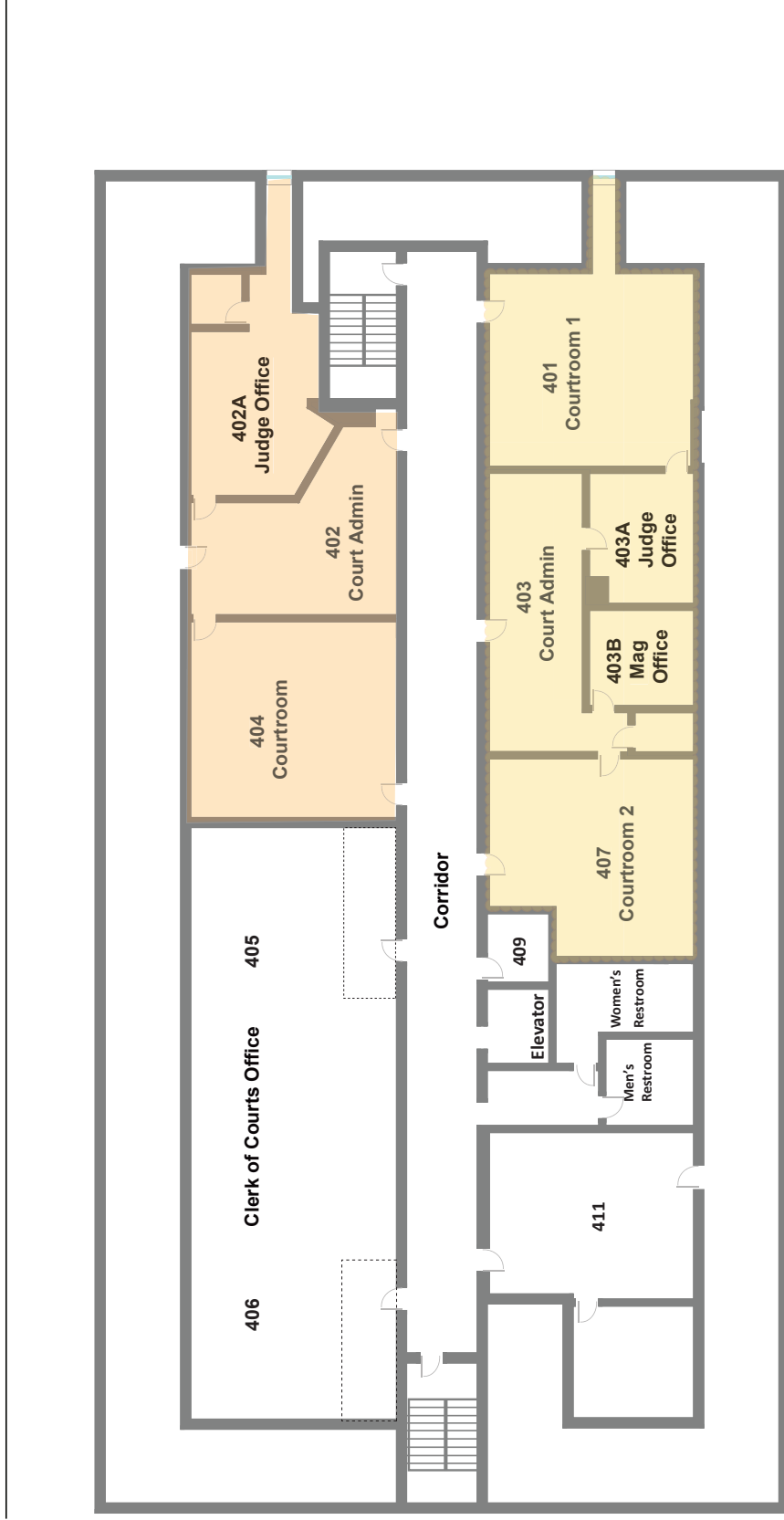


Fairfield County Hall of Justice  
**SECOND FLOOR**

**ADDENDUM #1**



# BUILDING FLOOR PLAN



Fairfield County Hall of Justice  
**FOURTH FLOOR**

**ADDENDUM #1**

